

# SITE LOCATION

Figure 1  
 Tioga County Route 434  
 Draft Generic Environmental Impact Statement  
 September 2005

- KEY
- PROJECT SITE BOUNDARY
  - PARCEL BOUNDARY
  - MUNICIPAL BOUNDARY
  - ROAD

PROJECT # 2003-032-20M  
 Copyright © 2005 Saratoga Associates. All Rights Reserved.  
 This map is computer generated using data acquired by Saratoga Associates from various sources and is intended only for reference, conceptual planning and presentation purposes. This map is not intended for and should not be used to establish boundaries, property lines, location of objects or to provide any other information typically needed for construction or any other purpose when engineered plans or lead surveys are required.  
 File Location: S:\GIS\03032\oswego\site\_dgeis.apr

**SARATOGA ASSOCIATES**

Landscape Architects, Architects,  
 Engineers, and Planners, P.C.  
 BOSTON NEW YORK SARATOGA SPRINGS







# PROJECT CONCEPT

Figure 2  
Tioga County Route 434  
DGEIS Submission

September, 2005

 WETLANDS

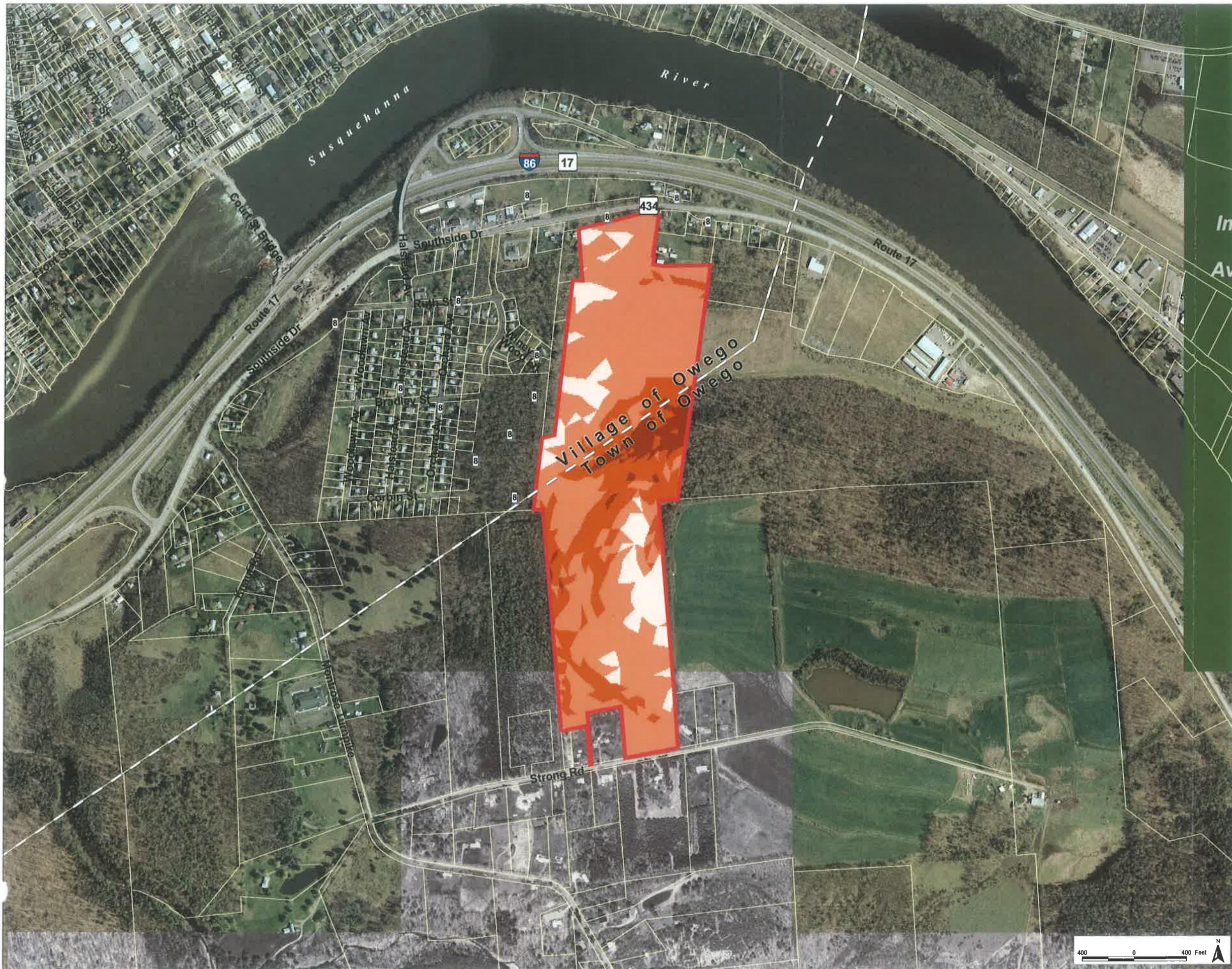
PROJECT # 03032.20  
Copyright © 2005 Saratoga Associates. All Rights Reserved.  
This map is computer generated using data acquired by Saratoga Associates from various sources and is intended only for reference, conceptual planning and presentation purposes. This map is not intended for and should not be used to establish boundaries, property lines, location of objects or to provide any other information typically needed for construction or any other purpose when engineered plans or land surveys are required.  
F:\Program Support\CAD\Template\1x17 Horizontal\_Graphic.dwg

**SARATOGA ASSOCIATES**

Landscape Architects, Architects,  
Engineers, and Planners, P.C.  
BOSTON - NEW YORK - SARATOGA SPRINGS







# SLOPE BREAKDOWN

Figure 3  
Tioga County Route 434  
Draft Generic Environmental Impact Statement  
May 2005

**KEY**

- PROJECT SITE BOUNDARY
- PARCEL BOUNDARY
- MUNICIPAL BOUNDARY
- ROAD

**SLOPES**

- 0% - 8%
- 8% - 16%
- 16% - 25%
- >25%

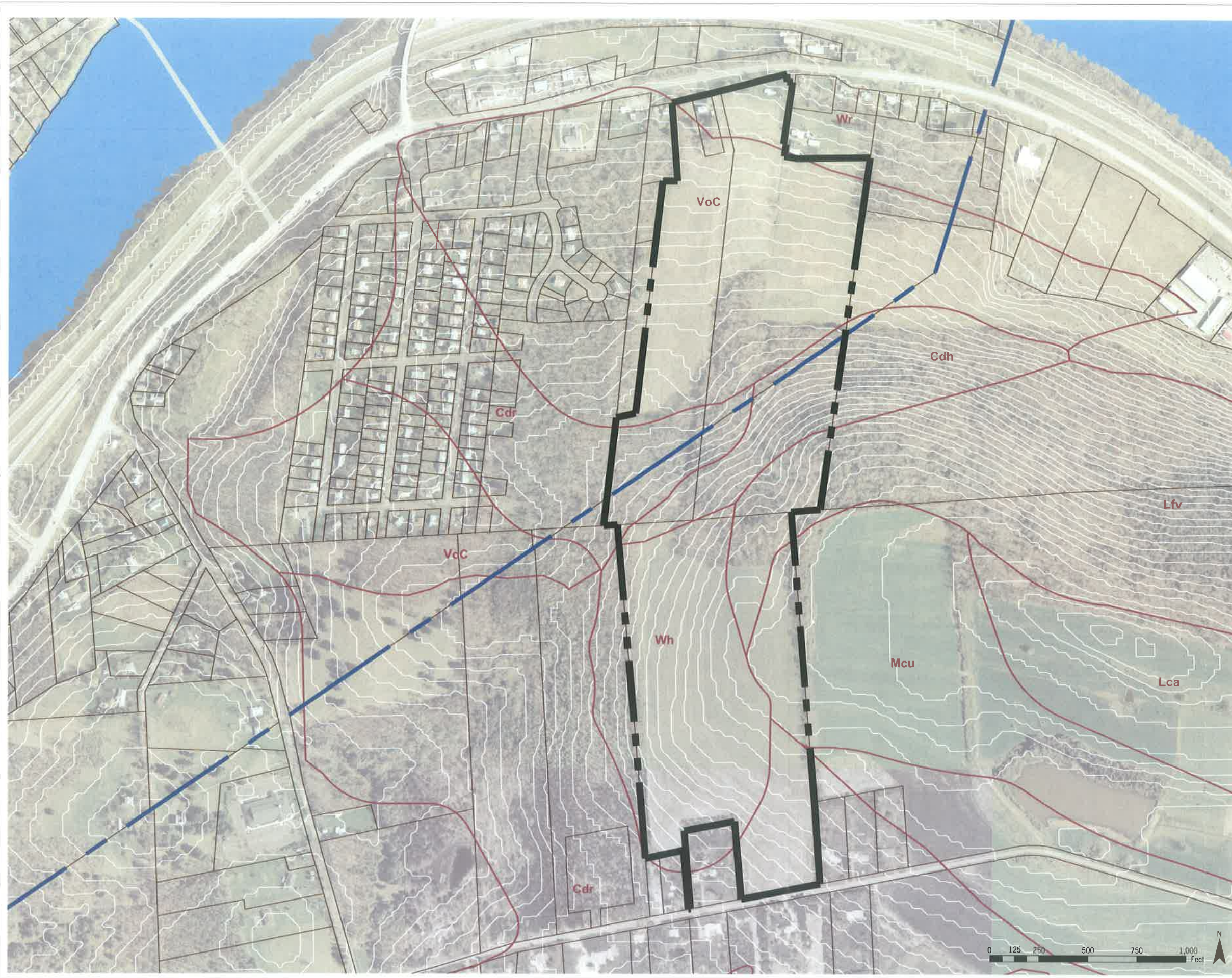
PROJECT # 2003-032.20M  
Copyright © 2005 Saratoga Associates. All Rights Reserved.  
This map is computer generated using data acquired by Saratoga Associates from various sources and is intended only for reference, conceptual planning and presentation purposes. This map is not intended for and should not be used to establish boundaries, property lines, location of objects or to provide any other information typically needed for construction or any other purpose when engineered plans or Inad surveys are required.  
File Location: S:\GIS\03032\owegosite\_dgets.apr

**SARATOGA  
ASSOCIATES**

Landscape Architects, Architects,  
Engineers, and Planners, P.C.  
BOSTON NEW YORK SARATOGA SPRINGS







# SOILS MAP

Figure 4  
Tioga County Route 434  
DGEIS Submission

September, 2005

## KEY

### Characteristics

- Cdh - Canfield - gravelly silt loam, hilly phase, 16-30 % slopes, well-drained soil
- Cdr - Canfield - gravelly silt loam, rolling phase, 9-16 % slopes, well drained soil
- Cdu - Canfield - gravelly silt loam, undulating phase, 0-8 % slopes, well-drained
- Lfv - Lordstown - flaggy silt loam, very steep phase, 46-60 % slopes, well-drained soil
- Mcu - Mardin - channery silt loam undulating phase, 0-8 % slopes, moderately drained soil
- VoC - Volusia - channery and gravelly silt loams, sloping phases, 9-15% slopes, poorly drained soil
- Wh - Wooster - gravelly silt loam, hilly phase, 16-25 % slopes, well-drained soil
- Wr - Woostern - gravelly silt loam, rolling phase, 6-15 % slopes, moderately drained soil

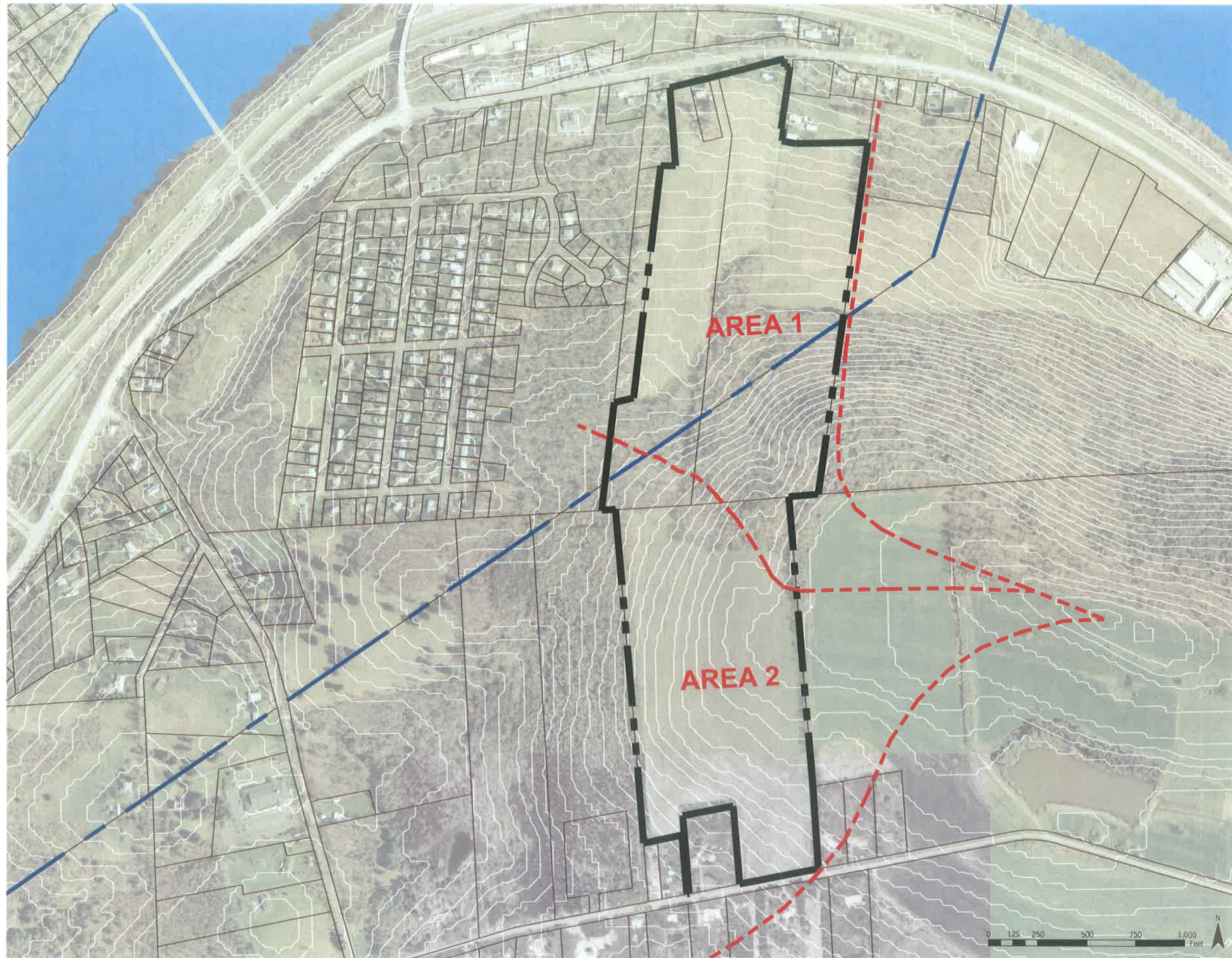
PROJECT #  
Copyright © 2005 Saratoga Associates. All Rights Reserved.  
This map is computer generated using data acquired by Saratoga Associates from various sources and is intended only for reference, conceptual planning and presentation purposes. This map is not intended for and should not be used to establish boundaries, property lines, location of objects or to provide any other information typically needed for construction or any other purpose when engineered plans or land surveys are required.  
P:\Program Support\CAD\template\1x17 Horizontal Graphic.dwg

**SARATOGA ASSOCIATES**

Landscape Architects, Architects,  
Engineers, and Planners, P.C.  
BOSTON - NEW YORK - SARATOGA SPRINGS







# EXISTING CONDITIONS DRAINAGE AREAS

Figure 5  
Tioga County Route 434  
DGEIS Submission

September, 2005

PROJECT #  
Copyright © 2005 Saratoga Associates. All Rights Reserved.  
This map is computer generated using data acquired by Saratoga Associates from various sources and is intended only for reference, conceptual planning and presentation purposes. This map is not intended for and should not be used to establish boundaries, property lines, location of objects or to provide any other information typically needed for construction or any other purpose when engineered plans or land surveys are required.

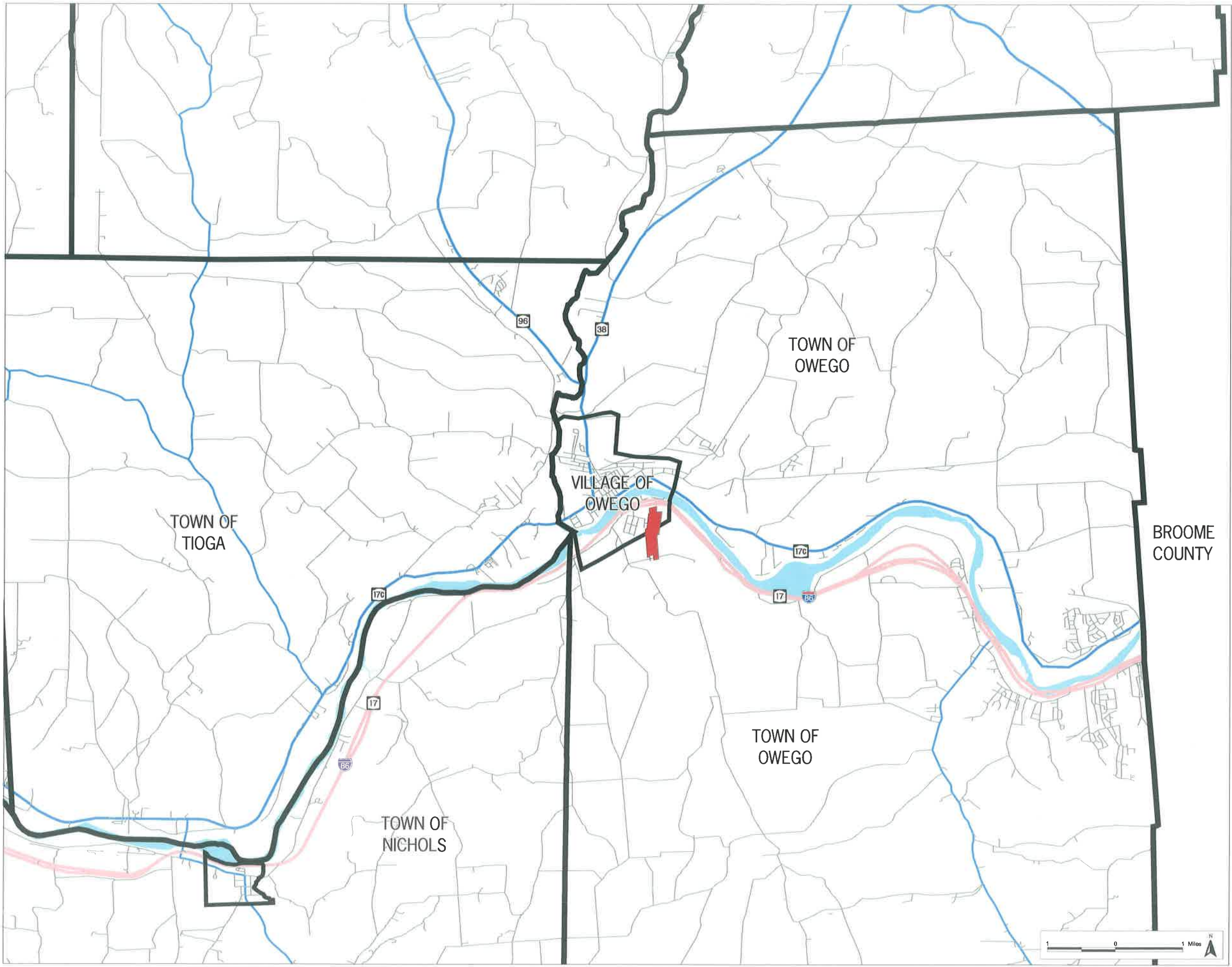
PAProgram Support\CAD\template\1x17 Horizontal\_Graphic.dwg

**SARATOGA  
ASSOCIATES**

Landscape Architects, Architects,  
Engineers, and Planners, P.C.  
BOSTON - NEW YORK - SARATOGA SPRINGS







# TRANSPORTATION NETWORK

Figure 7  
 Tioga County Route 434  
 Draft Generic Environmental Impact Statement  
 September 2005

- KEY
- PROJECT SITE BOUNDARY
  - SUSQUEHANNA RIVER
  - TOWN / VILLAGE BOUNDARIES
  - INTERSTATE HIGHWAY
  - LOCAL ROADWAY
  - OTHER MAJOR ROADS

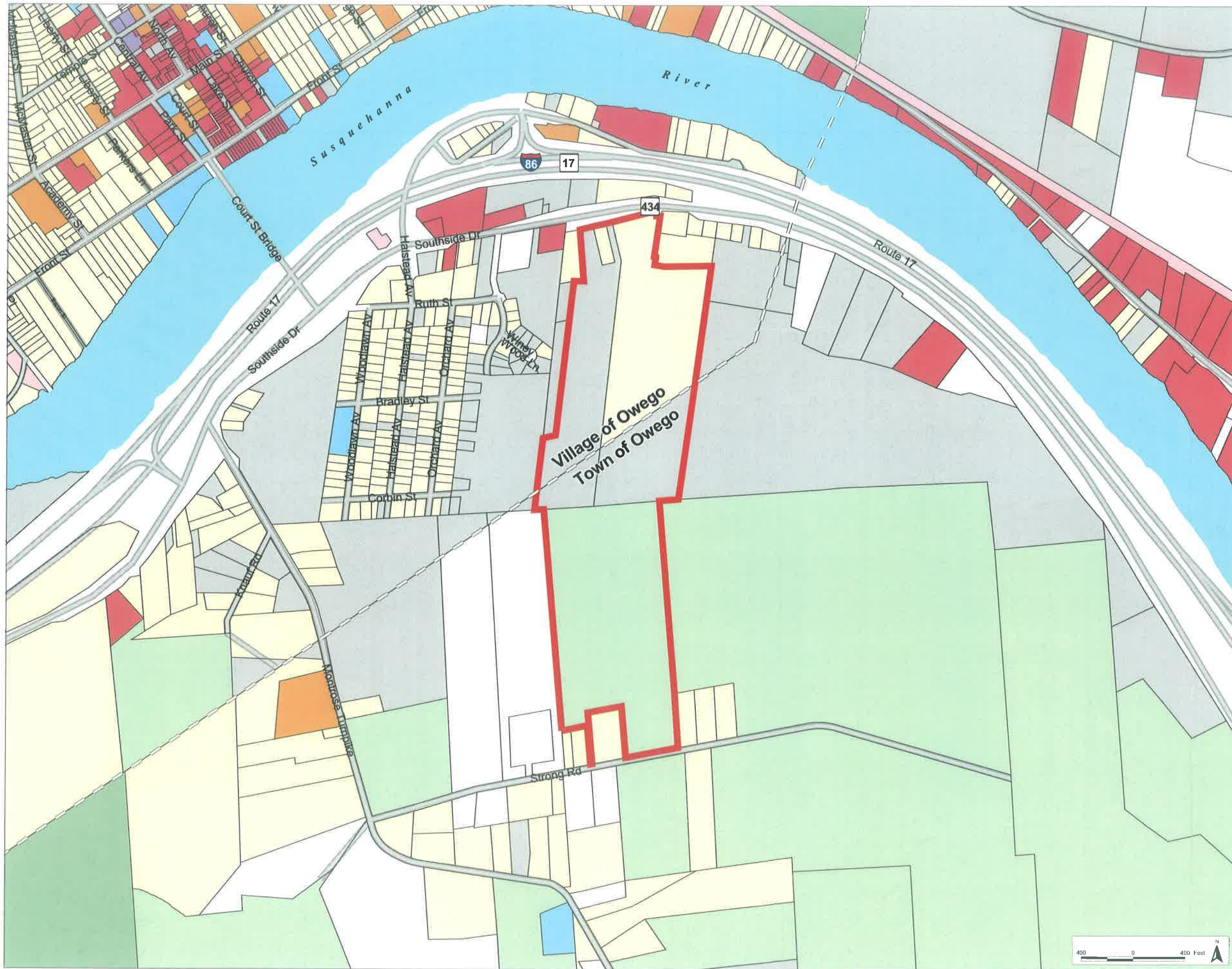
PROJECT # 2003 032 20M  
 Copyright © 2005 Saratoga Associates. All Rights Reserved.  
 This map is computer generated using data acquired by Saratoga Associates from various sources and is intended only for reference, conceptual planning and presentation purposes. This map is not intended for and should not be used to establish boundaries, property lines, location of objects or to provide any other information typically needed for construction or any other purpose when engineered plans or land surveys are required.  
 File Location: S:\GIS\03032\oswego\site.dgeis.apr

**SARATOGA ASSOCIATES**

Landscape Architects, Architects,  
 Engineers, and Planners, P.C.  
 BOSTON NEW YORK SARATOGA SPRINGS







# EXISTING LAND USE

Figure 8  
 Tioga County Route 434  
 Draft Generic Environmental Impact Statement  
 September 2005

- KEY**
- PROJECT SITE BOUNDARY
  - AGRICULTURAL
  - RESIDENTIAL
  - VACANT
  - COMMERCIAL
  - RECREATION & ENTERTAINMENT
  - PUBLIC SERVICE
  - COMMUNITY SERVICE
  - INDUSTRIAL
  - WILD, FORESTED, CONSERVATION LANDS
  - PARCEL BOUNDARY
  - MUNICIPAL BOUNDARY
  - ROAD

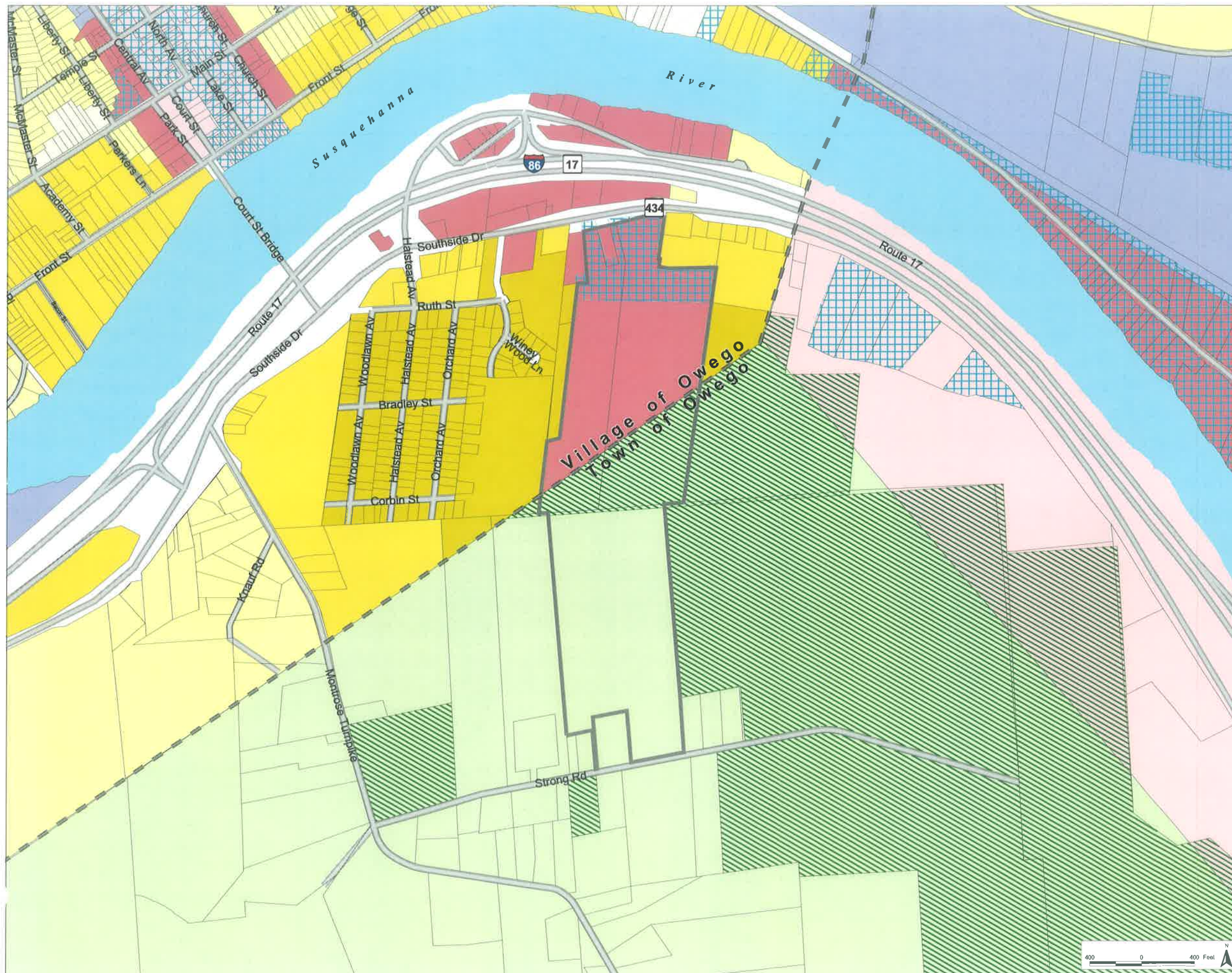
PROJECT # 2003-032.20M  
 Copyright © 2005 Saratoga Associates. All Rights Reserved.  
 This map is computer generated using data acquired by Saratoga Associates from various sources and is intended only for reference, conceptual planning and presentation purposes. This map is not intended for and should not be used to establish boundaries, property lines, location of objects or to provide any other information typically needed for construction or any other purpose when engineered plans or land surveys are required.  
 File Location: S:\GIS\03032\owego\site\_dgels.apr

**SARATOGA ASSOCIATES**

Landscape Architects, Architects,  
 Engineers, and Planners, P.C.  
 BOSTON NEW YORK SARATOGA SPRINGS







# EXISTING ZONING

Figure 9  
 Tioga County Route 434  
 Draft Generic Environmental Impact Statement  
 September 2005

- KEY**
- VILLAGE OF OWEGO ZONING DISTRICTS**
- BUSINESS
  - COMMERCIAL BUSINESS
  - INDUSTRIAL
  - RESIDENTIAL 1 (SINGLE FAMILY)
  - RESIDENTIAL 2 (TWO FAMILY)
  - RESIDENTIAL 3 (THREE FAMILY OR MORE)
  - RESIDENTIAL 4 (MULTI-FAMILY/SOME BUSINESS)
- TOWN OF OWEGO ZONING DISTRICTS**
- BUSINESS
  - HIGHWAY BUSINESS
  - INDUSTRIAL
  - PLANNED UNIT DEVELOPMENT
  - RESIDENTIAL A (SINGLE FAMILY, MIN.: 15,000 SQ FT)
  - RESIDENTIAL B (SINGLE FAMILY, MIN.: 9,000 SQ FT)
  - RESIDENTIAL C (TWO FAMILY)
  - AGRICULTURAL
- Other Symbols:**
- EMPIRE ZONE
  - AGRICULTURAL DISTRICT
  - PROJECT SITE BOUNDARY
  - PARCEL BOUNDARY

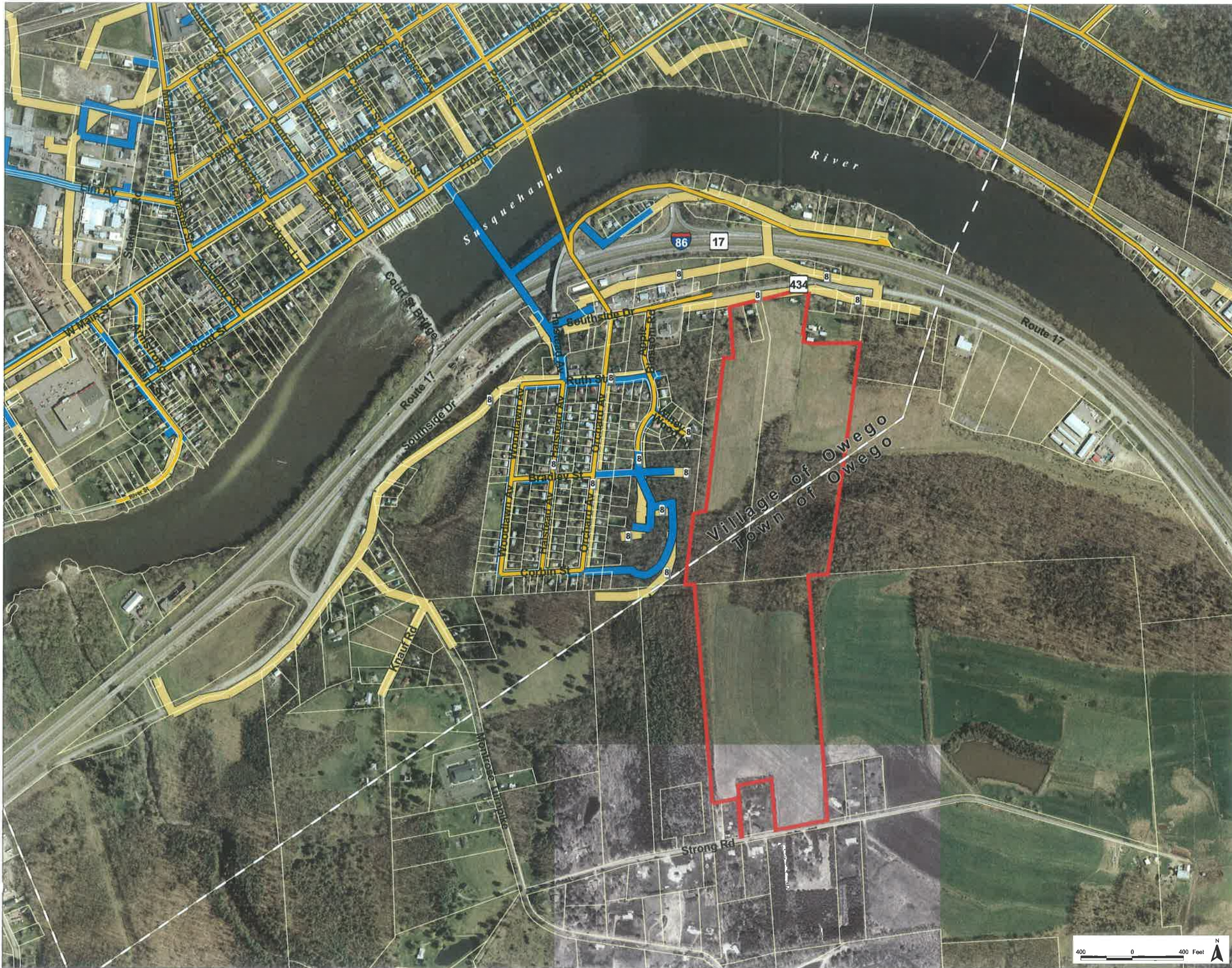
PROJECT # 2003-032-20M  
 Copyright © 2005 Saratoga Associates. All Rights Reserved.  
 This map is computer generated using data acquired by Saratoga Associates from various sources, and is intended only for reference, conceptual planning, and presentation purposes. This map is not intended for and should not be used to establish boundaries, property lines, location of objects or to provide any other information typically needed for construction or any other purpose when engineered plans or final surveys are required.  
 File Location: S:\GIS\03032\oswego\site\_dgers.spr

**SARATOGA ASSOCIATES**

Landscape Architects, Architects,  
 Engineers, and Planners, P.C.  
 BOSTON · NEW YORK · SARATOGA SPRINGS


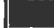










# SEWER, WATER & GAS

Figure 10  
 Tioga County Route 434  
 Draft Generic Environmental Impact Statement  
 September 2005

- KEY
-  PROJECT SITE BOUNDARY
  -  PARCEL BOUNDARY
  -  MUNICIPAL BOUNDARY
  -  NYSEG GAS LINE
  -  WATER LINE
  -  SEWER LINE (WITH DIAMETER LABEL)

PROJECT # 2003-032.20M  
 Copyright © 2005 Saratoga Associates. All Rights Reserved.  
 This map is computer generated using data acquired by Saratoga Associates from various sources and is intended only for reference, conceptual planning and presentation purposes. This map is not intended for and should not be used to establish boundaries, property lines, location of objects or to provide any other information typically needed for construction or any other purpose when engineered plans or final surveys are required.  
 File Location: S:\GIS\03032\oswegosite.dg.es.apr

**SARATOGA ASSOCIATES**

Landscape Architects, Architects,  
 Engineers, and Planners, P.C.  
 BOSTON NEW YORK SARATOGA SPRINGS








# WETLAND IMPACT MAP

Figure 12  
 Tioga County Route 434  
 DGEIS Submission

September, 2005

 WETLANDS

PROJECT # 03032.20  
 Copyright © 2005 Saratoga Associates. All Rights Reserved.  
 This map is computer generated using data acquired by Saratoga Associates from various sources and is intended only for reference, conceptual planning and presentation purposes. This map is not intended for and should not be used to establish boundaries, property lines, location of objects or to provide any other information typically needed for construction or any other purpose when engineered plans or land surveys are required.

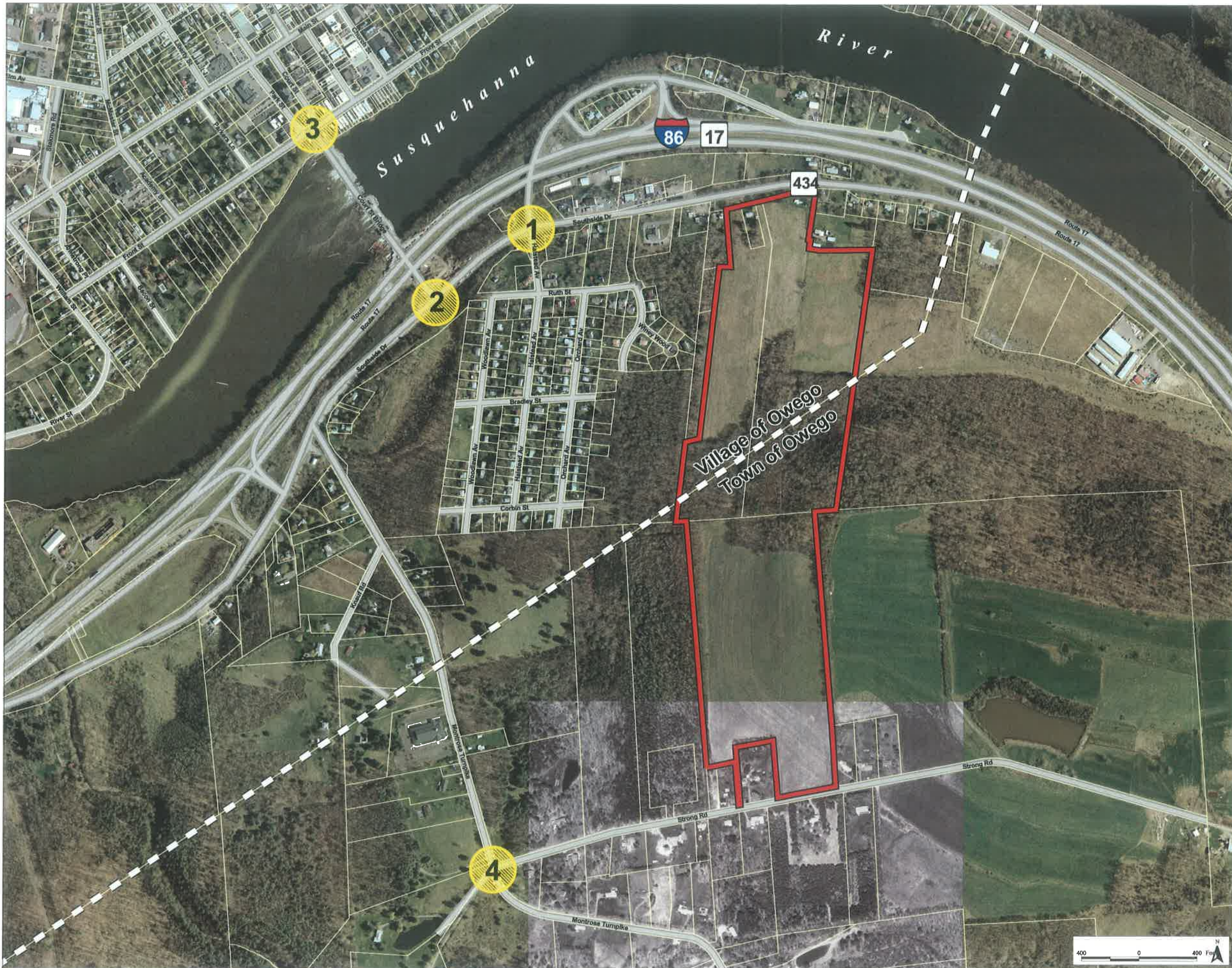
P:\Program Support\CAD\Template\1x17 Horizontal\_Graphic.dwg

**SARATOGA ASSOCIATES**

Landscape Architects, Architects,  
 Engineers, and Planners, P.C.  
 BOSTON • NEW YORK • SARATOGA SPRINGS







# TRANSPORTATION ANALYSIS INTERSECTIONS

Figure 13  
 Tioga County Route 434  
 Draft Generic Environmental Impact Statement  
 September 2005

- KEY
- ANALYSIS INTERSECTION
  - PROJECT SITE BOUNDARY
  - PARCEL BOUNDARY
  - MUNICIPAL BOUNDARY
  - ROAD

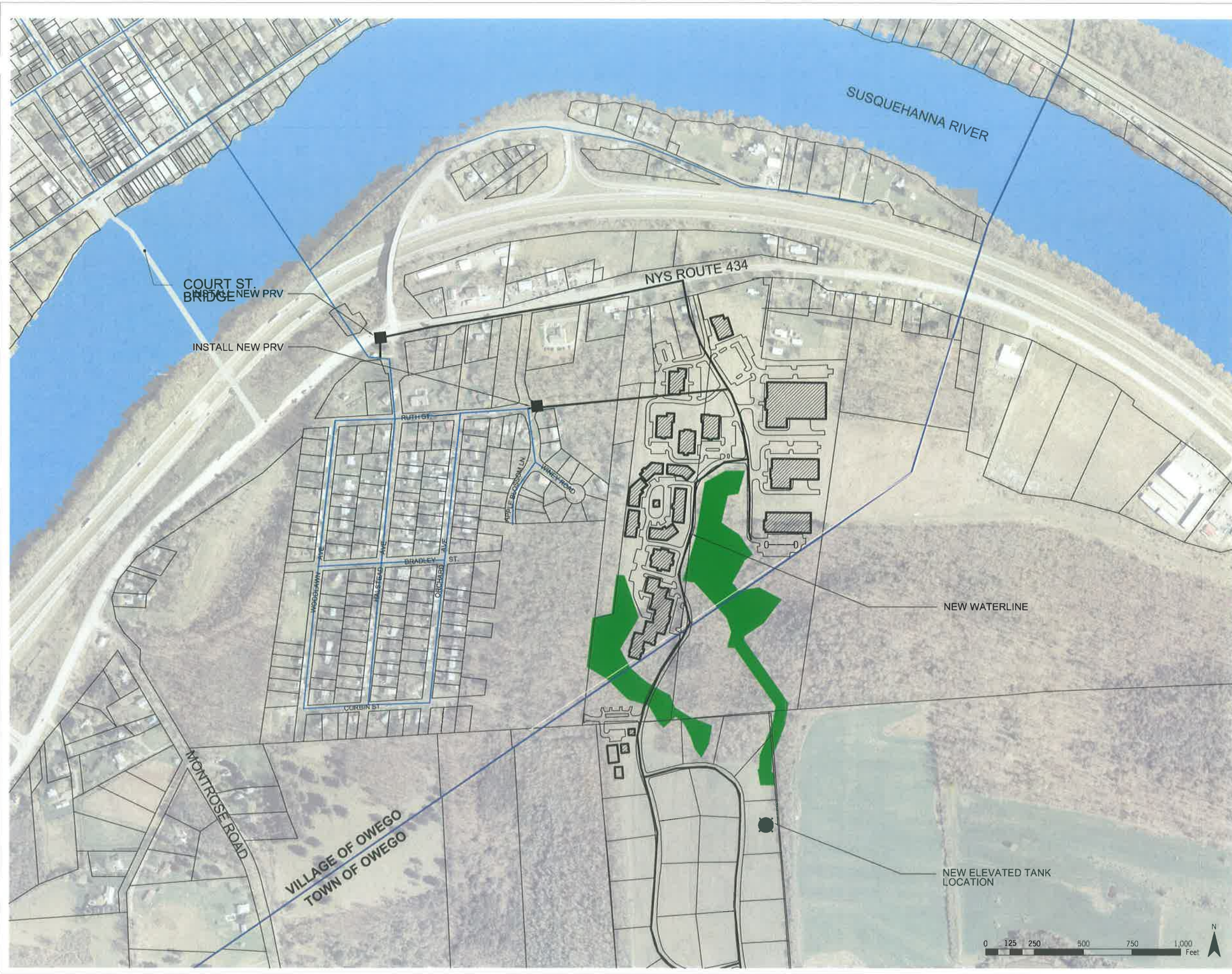
PROJECT # 2003-032 20M  
 Copyright © 2005 Saratoga Associates. All Rights Reserved.  
 This map is computer generated using data acquired by Saratoga Associates from various sources and is intended only for reference, conceptual planning and presentation purposes. This map is not intended for and should not be used to establish boundaries, property lines, location of objects or to provide any other information typically needed for construction or any other purpose when engineered plans or land surveys are required.  
 File Location: S:\GIS\03032\oswego.ste.dgears.apr

**SARATOGA ASSOCIATES**

Landscape Architects, Architects,  
 Engineers, and Planners, P.C.  
 BOSTON NEW YORK SARATOGA SPRINGS







# PROPOSED WATER ROUTES

## TANK LOCATION 1

Figure 14  
 Tioga County Route 434  
 DGEIS Submission  
 September, 2005

- WETLANDS
- EXISTING WATER LINES
- PROPOSED WATER LINES

**HUNT** : 607.358.1000  
 : FAX 358.1800

ENGINEERS • ARCHITECTS • SURVEYORS  
 AIRPORT CORPORATE PARK, 100 HUNT CENTER, HORSEHEADS, N.Y. 14845

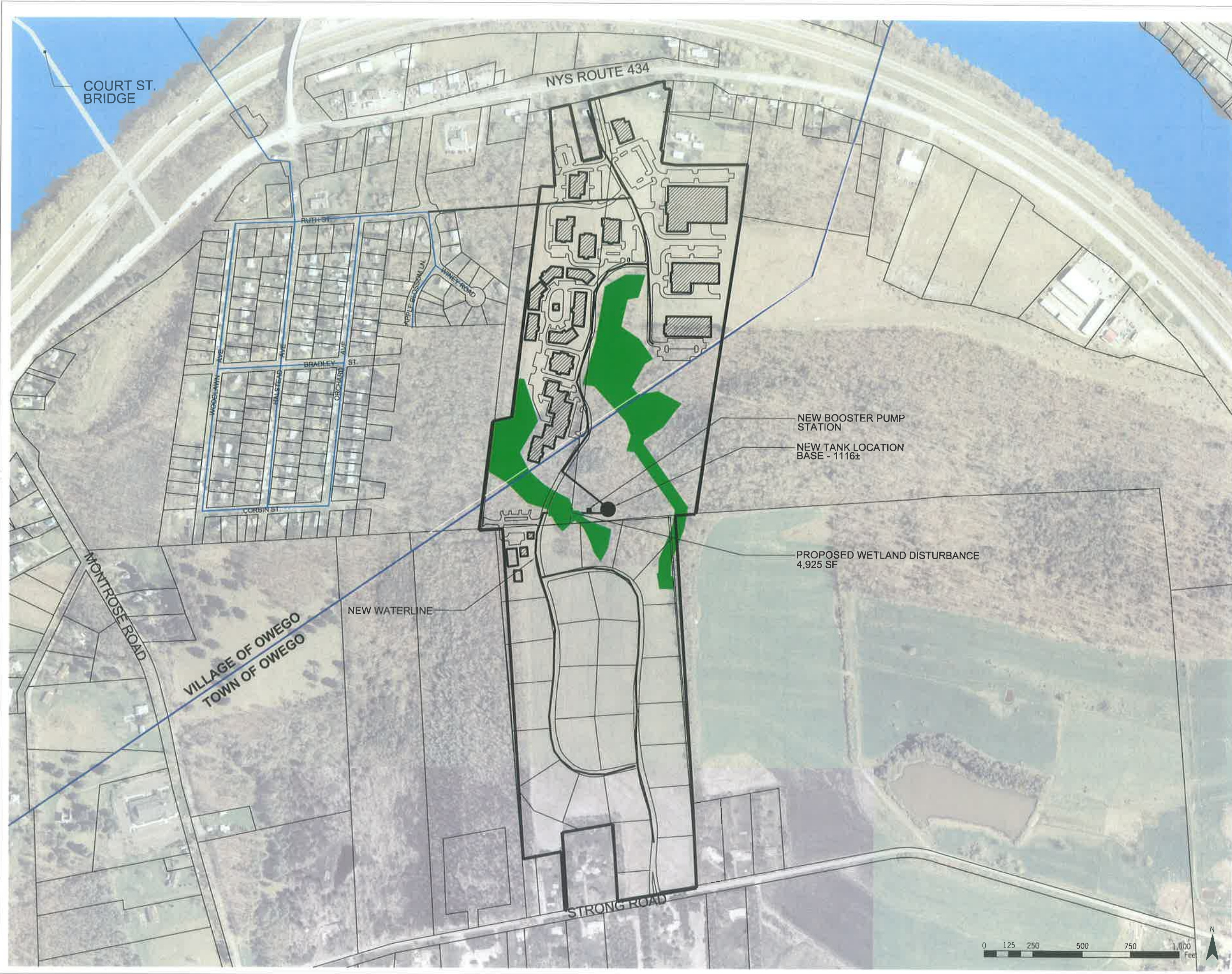
PROJECT # 03032.20  
 Copyright © 2005 Saratoga Associates. All Rights Reserved.  
 This map is computer generated using data acquired by Saratoga Associates from various sources and is intended only for reference, conceptual planning and presentation purposes. This map is not intended for and should not be used to establish boundaries, property lines, location of objects or to provide any other information typically needed for construction or any other purpose when engineered plans or land surveys are required.  
 P:\Program Support\CAD\Template\1x17 Horizontal\_Graphic.dwg

**SARATOGA ASSOCIATES**

Landscape Architects, Architects,  
 Engineers, and Planners, P.C.  
 BOSTON - NEW YORK - SARATOGA SPRINGS







# PROPOSED WATER ROUTES TANK LOCATION 2

Figure 15  
Tioga County Route 434  
DGEIS Submission

September, 2005

- WETLANDS
- EXISTING WATER LINES
- PROPOSED WATER LINES

**HUNT** : 607.358.1000  
: FAX 358.1800

ENGINEERS • ARCHITECTS • SURVEYORS  
AIRPORT CORPORATE PARK, 100 HUNT CENTER, HORSEHEADS, N.Y. 14845

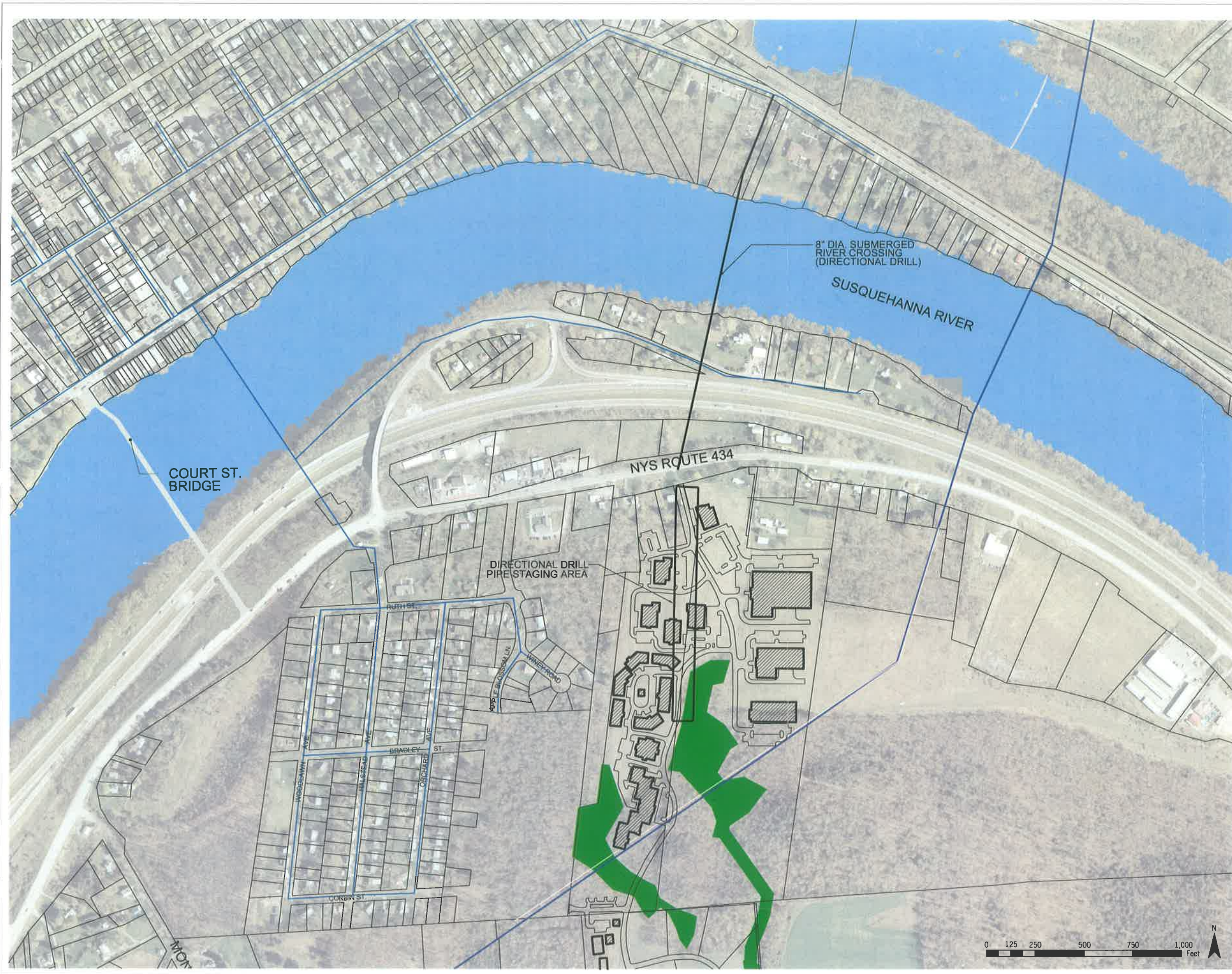
PROJECT # 03032.20  
Copyright © 2005 Saratoga Associates. All Rights Reserved.  
This map is computer generated using data acquired by Saratoga Associates from various sources and is intended only for reference, conceptual planning and presentation purposes. This map is not intended for and should not be used to establish boundaries, property lines, location of objects or to provide any other information typically needed for construction or any other purpose when engineered plans or land surveys are required.  
P:\Program Support\CAD\Templates\1x17 Horizontal\_Graphic.dwg

**SARATOGA ASSOCIATES**

Landscape Architects, Architects,  
Engineers, and Planners, P.C.  
BOSTON • NEW YORK • SARATOGA SPRINGS







# PROPOSED WATER ROUTES SUBMERGED WATERLINE

Figure 16  
 Tioga County Route 434  
 DGEIS Submission  
 September, 2005

- WETLANDS
- EXISTING WATER LINES
- PROPOSED WATER LINES

**HUNT** : 607 358-1000  
 : FAX 358-1800

ENGINEERS • ARCHITECTS • SURVEYORS  
 AIRPORT CORPORATE PARK, 100 HUNT CENTER, HORSEHEADS, N.Y. 14845

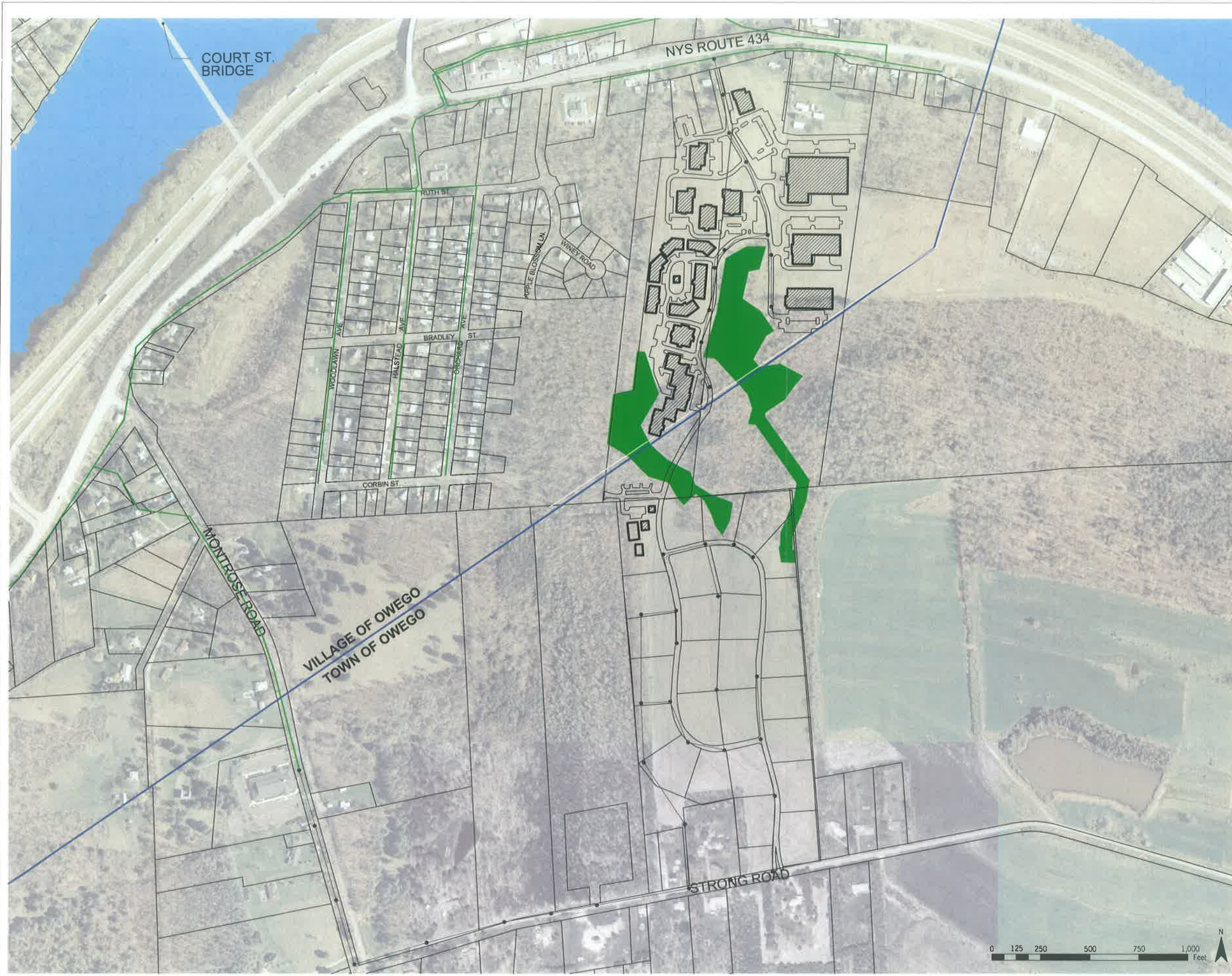
PROJECT # 03032.30  
 Copyright © 2005 Saratoga Associates. All rights Reserved.  
 This map is computer generated using data acquired by Saratoga Associates from various sources and is intended only for reference, conceptual planning and presentation purposes. This map is not intended for and should not be used to establish boundaries, property lines, location of objects or to provide any other information typically needed for construction or any other purpose when engineered plans or land surveys are required.  
 P:\Program Support\CAD\Templates\1x17 Horizontal\_Graphic.dwg

**SARATOGA ASSOCIATES**

Landscape Architects, Architects,  
 Engineers, and Planners, P.C.  
 BOSTON • NEW YORK • SARATOGA SPRINGS







# PROPOSED SEWER ROUTE

Figure 17  
Tioga County Route 434  
DGEIS Submission

September, 2005

- WETLANDS
- EXISTING SEWER LINES
- PROPOSED SEWER LINES

**HUNT** : 607 358-1000  
: FAX 358-1800

ENGINEERS • ARCHITECTS • SURVEYORS  
AIRPORT CORPORATE PARK, 100 HUNT CENTER, HORSEHEADS, N.Y. 14845

PROJECT # 03032.20  
Copyright © 2005 Saratoga Associates. All Rights Reserved.  
This map is computer generated using data acquired by Saratoga Associates from various sources and is intended only for reference, conceptual planning and presentation purposes. This map is not intended for and should not be used to establish boundaries, property lines, location of objects or to provide any other information typically needed for construction or any other purpose when engineered plans or land surveys are required.  
P:\Program Support\CAD\template\1x17 Horizontal\_Graphic.dwg

**SARATOGA ASSOCIATES**

Landscape Architects, Architects,  
Engineers, and Planners, P.C.  
BOSTON - NEW YORK - SARATOGA SPRINGS

